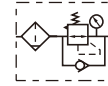


GAFR Series Filter & regulator



Reflux valve is attached



No reflux valve is attached



Ordering code

GAFR300 **10** **S** **W T K**

①
②
③
④
⑤
⑥
⑦
⑧
⑨
⑩

① Model	② Material of bowl	③ Port size	④ Drain type	⑤ Type code
GAFR200:GA200 Series filter-regulator	Blank: PC N: Nylon C: Metal	06: 1/8" 08: 1/4"	Blank: Semi-auto drain A: Automatic drain	S: Standard L: Lower pressure [Note1]
GAFR300:GA300 Series filter-regulator		08: 1/4" 10: 3/8" 15: 1/2"		
GAFR400:GA400 Series filter-regulator		10: 3/8" 15: 1/2"		
GAFR600:GA600 Series filter-regulator	C: Metal 20: 3/4" 25: 1"			
⑥ Accessories	⑦ Pressure gauge	⑧ Filtering grade	⑨ Thread type	⑩ Reflux valve
Blank: Bracket J: No bracket	Blank: Circular with clip N: No pressure gauge	Blank: 40µm W: 5µm	T: NPT (Scale: bar/psi)	Blank: Without reflux valve K: with reflux valve [Note2]

[Note1] The maximum work pressure of lower pressure type is 58psi(0.4MPa);

[Note2] Please refer to page 141 for details of reflux valve.

Product feature

1. Circular square pressure gauge which with clip and magnifier is used to save installation space.
2. The pressed-in self-locking mechanism can prevent the abnormal movement of the set pressure caused by external interfere.
3. Balanced design is adopted for the pressure adjustment mechanism.
4. Unique diversion structure spins the air flowing through to effectively separate the liquid from the air and reliably filter the solid grain.
5. The filtering grade includes 5 µ m and 40 µ m (optional).
6. Two drain types are available: semi-auto drain and automatic drain.
7. Three material of bowl are available: PC, Nylon and metal.
8. The bracket can be selected for installation.

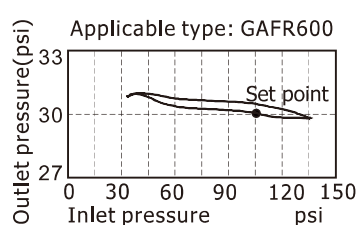
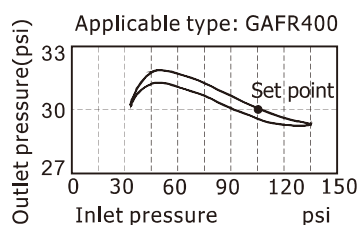
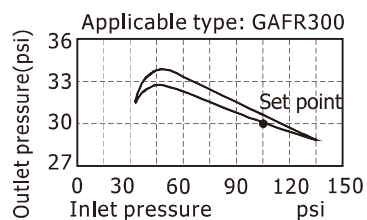
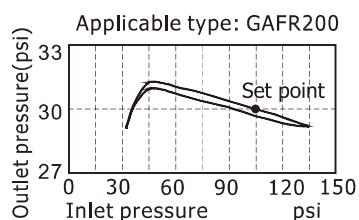
GAFR Series Filter & regulator

Specification

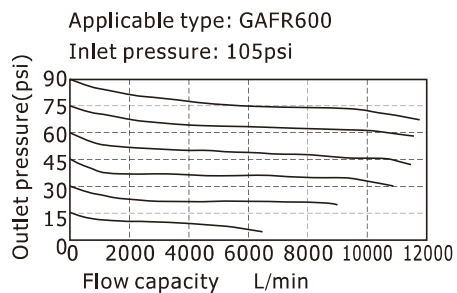
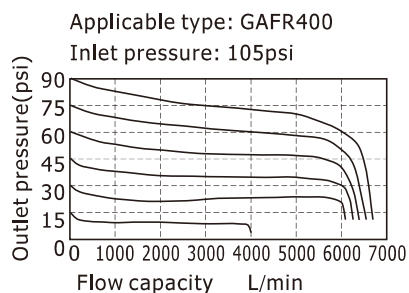
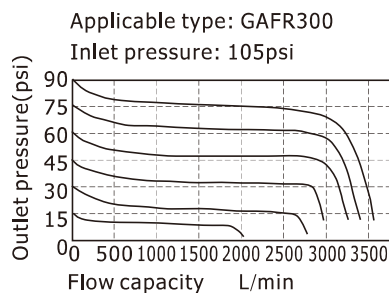
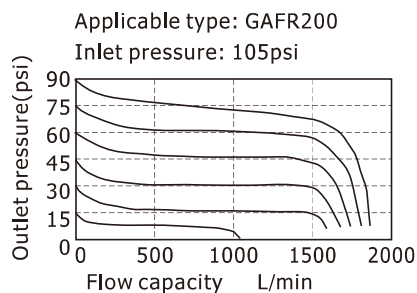
Model	GAFR20006	GAFR20008	GAFR30008	GAFR30010	GAFR30015	GAFR40010	GAFR40015	GAFR60020	GAFR60025
Fluid	Air								
Port size [Note1]	1/8"	1/4"	1/4"	3/8"	1/2"	3/8"	1/2"	3/4"	1"
Filtering grade	40 μm or 5 μm								
Pressure range	20~130psi(0.15~0.9MPa)								
Max. pressure	145psi(1.0MPa)								
Proof pressure	215psi(1.5MPa)								
Temperature range	-5~70°C(Unfreeze)								
Capacity of drain bowl	25CC		60CC		100CC		205CC		
Weight	290g		500g		880g		1880g		

[Note1] NPT thread is available.

Pressure chart

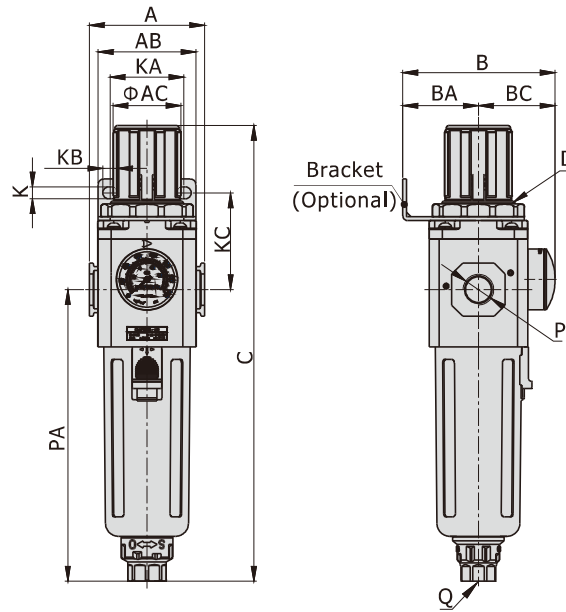


Flow chart



GAFR Series Filter & regulator

Dimensions



[Unit: mm]

Model\Item	A	AB	AC	B	BA	BC	C	D	K	KA	KB	KC	P	PA	Q
GAFR200-06	52.5	55	31	69	30	39	192.5	M33x1.5	5.4	34	15.4	52	1/8"	120	M5X0.8
GAFR200-08	52.5	55	31	69	30	39	192.5	M33x1.5	5.4	34	15.4	52	1/4"	120	M5X0.8
GAFR300-08	62.5	53	38	82.5	41	41.5	247	M40x1.5	6.5	40	8	52.5	1/4"	158	G1/4
GAFR300-10	62.5	53	38	82.5	41	41.5	247	M40x1.5	6.5	40	8	52.5	3/8"	158	G1/4
GAFR300-15	62.5	53	38	82.5	41	41.5	247	M40x1.5	6.5	40	8	52.5	1/2"	158	G1/4
GAFR400-10	80	72	52	99	50	49	285.5	M55x2.0	8.5	55	11	57	3/8"	177.5	G1/4
GAFR400-15	80	72	52	99	50	49	285.5	M55x2.0	8.5	55	11	57	1/2"	177.5	G1/4
GAFR600-20	100	90	59	128	70	58	336.5	M62x1.5	11	66	13	76	3/4"	205	G1/4
GAFR600-20	100	90	59	128	70	58	336.5	M62x1.5	11	66	13	76	1"	205	G1/4