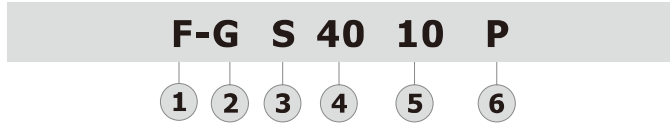


Preparation unit—Accessories

GS/GF/GU Series pressure gauge



Ordering code



① Accessories code	② Model	③ Mount Type Code
F: Accessories	G: Pressure gauge	S: Standard Mount F: Flange Mount U: Panel Mount
④ Dial diameter	⑤ Max. pressure scale	⑥ Scale and thread type
30: OD 30mm 40: OD 40mm 50: OD 50mm 60: OD 60mm	04: 60psi 10: 150psi	P: psi(NPT)

Specification

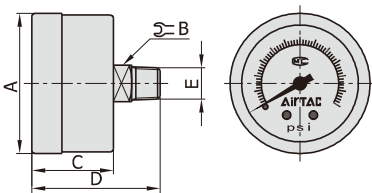
Model	GS40, GF40, GU40	GS50, GF50, GU50	GF60, GU60
Fluid	Air		
Port size	1/8"	1/4"	1/4"
Temperature range	-20~70℃		
Accuracy grade	2.5		
The pressure range of units and instructions	0~140psi(Standard type); 0~60psi(Lower pressure type)		
Material of major parts	Shell: SPCC ; Core: Brass		

Product feature

1. It has sensitive reaction and can work under low pressure.
2. The displayed words in the dial are clear.
3. There are several installation ways and installing accessories to be selected.
4. Various dimensions of screw thread are available.

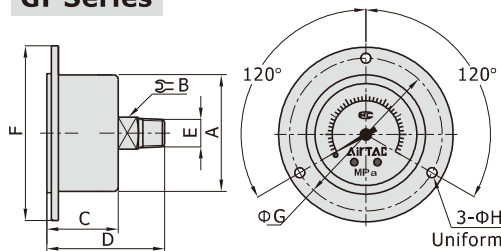
Dimensions

GS Series



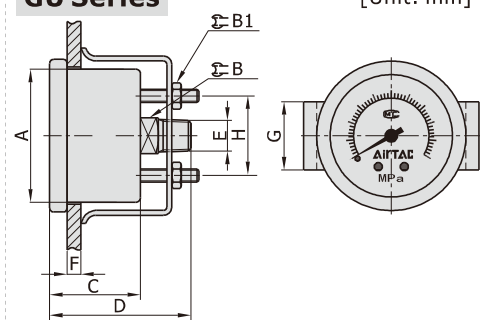
Model	A	B	C	D	E
GS-40	42	11	24.5	38.5	1/8"
GS-50	52	14	26.5	44.5	1/4"

GF Series



Model	A	B	C	D	E	F	G	H
GF-40	42	11	24.5	40.5	1/8"	60	52.5	3.4
GF-50	52	14	27.5	47.5	1/4"	71	62	4.4
GF-60	62	14	30	50	1/4"	82	71.5	4.4

GU Series



Model	A	B	B1	C	D	E	F(max)	G	H
GU-40	42	11	7	28	43.5	1/8"	5	21	24.5
GU-50	52	14	8	30.5	50	1/4"	7	24	35
GU-60	62	14	8	30.5	50	1/4"	7	25	35

[Unit: mm]